

The Start of ArtGymSD

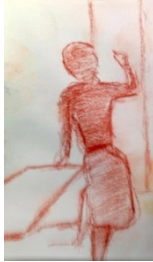
SDAI Museum of the Living Artist

ArtGymSD at SDAI

Comments, Pictures, Figures

ArtGymSD at SDAI

Tim Field, (Director of SDAI at the time), offered the SDAI gallery floor during the evenings to continue the experiment from the one week installation at Larry's Garage Gallery (4141 Alabama). ArtGymSD became ArtGymSD at SDAI.



Test Run of ArtGym at SDAI April 16, 2012, Sunday 8:00am until 12:00pm in SDAI on the Gallery Floor. Worked out well. Had drop-in's, the famous Diana, LJ, Ruth, and the usual supporting cast... Jonathan did this sketch of Diana drawing Richard.

2012 Spring – Summer ArtGymSD at SDAI

90 days open after or before SDAI regular hours from April 29 to August 30th

When ArtGymSD at SDAI first opened it ran 6 days a week Monday through Thursday from 6:00pm to 9pm, Saturday from 7am to 10am and Sunday's 9am to 12am. Cost was \$5 for members, \$10 for non-members, \$35 for a month pass. We also did a first time free.

There was no paid model program. The thought was just to provide the space as in the successful experiments at Larry's Garage Gallery and earlier at Richards.

Models for life drawing were introduced June 13 and ArtGymSD at SDAI came alive. A missing ingredient had been found. In a month's time attendance went from 5 to 30 and hovered between 22 and 35 on Mondays. Days without models remained slow...*

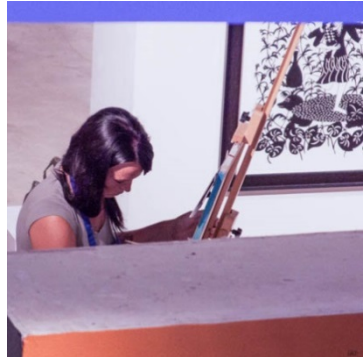
Quarter	Shop Days	Gym Days	Total Uses	Paid Uses	Unpaid or Pass	1-Day Pass	Photo
Spring and Summer 2012	90	90	566	236	330		0

Quarter	SDAI Membership	Gift	Door	Store	Gallery Sales	Pass Sales	Program Fee
Spring and Summer 2012		\$ -	\$ 319.18	\$ 3,947.46	\$ -	\$ -	\$ 1,179.00

Quarter	Staff ArtGymSD	Admin Asst ArtGymSD	After Hours Store Staff	Models	ShopTalk	Misc Merch	Facility Cost	SDAI Net
Spring and Summer 2012	\$ 1,410.00	\$ -	\$ -	\$ -	\$ -	\$ -		\$ 1,864.54

*Staff, Models and Shoptalk's were lumped together for the Spring and Summer. There were no pass users or pass purchases.

Memories from the 2012 Spring and Summer ArtGymSD at SDAI





Fall ArtGymSD was a complete revision

31 days open in the evening during the time period from 9/1 to 12/31/2013

Four days were dropped from the week. ArtGymSD at SDAI was only open Mondays and Wednesdays. Who ever worked as staff was paid \$10 an hour.

There were 2 fund raising events (Flash Modeling and the Graphite Social). It was resolved to always have a model when the gym was open. The shop was closed so that one person could cover the upstairs and the downstairs.

Quarter	Shop Days	Gym Days	Total Uses	Paid Uses	Unpaid or Pass	1-Day Pass	Photo
Fall 2012	0	31	836	700	120		16

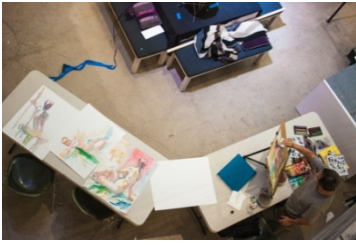
Quarter	SDAI Membership	Gift	Door	Store	Gallery Sales	Pass Sales	Program Fee
Fall 2012		\$ 225.00	\$ -	\$ -	\$ -	\$ -	\$ 4,310.00

Quarter	Staff ArtGymSD	Admin Asst ArtGymSD	After Hours Store Staff	Models	ShopTalk	Misc Merch	Facility Cost	SDAI Net
Fall 2012	\$ 890.00	\$ -	\$ -	\$ 3,350.00	\$ -	\$ 215.51		\$ 79.49

*Model costs and ShopTalk were combined. Staff was just cost of the 'key person.'

Memories from the 2012 Fall ArtGymSD at SDAI





Winter 2013 ArtGymSD was an expansion

39 days open in the evening during the time period from 1/6 to 3/31, the upstairs shop was open for 35 days.

Winter we had 2 photo shoots, 39 life drawing sessions, 8 Shop-Talks, 2 Merkabah's, Graham's and Katharine's book signing, Earth Day, Rapid-Fire Fund Raiser, and The Graphite Social Fund Raiser. Sunday and then, at the end, Saturday evenings were added in allowing for events like Merkabah and to help increase the shop sales (which had been opened back up).*

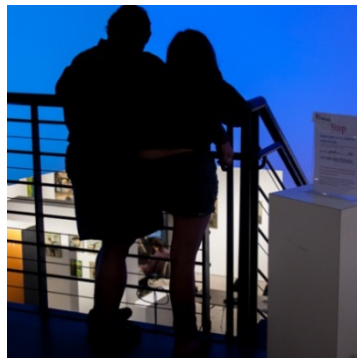
Quarter	Shop Days	Gym Days	Total Uses	Paid Uses	Unpaid or Pass	1-Day Pass	Photo
Winter 2012-2013	35	39	1271	991	255		25

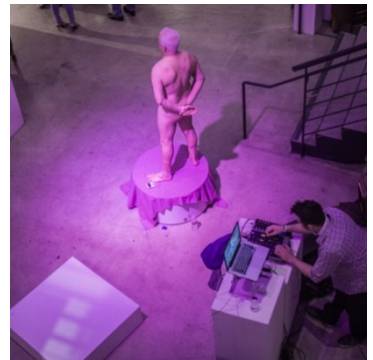
Quarter	SDAI Membership	Gift	Door	Store	Gallery Sales	Pass Sales	Program Fee
Winter 2012-2013		\$ 34.18	\$ 157.00	\$ 3,525.35	\$ -	\$ -	\$ 6,480.67

Quarter	Staff ArtGymSD	Admin Asst ArtGymSD	After Hours Store Staff	Models	ShopTalk	Misc Merch	Facility Cost	SDAI Net
Winter 2012-2013	\$ 1,775.00	\$ -	\$ -	\$ 3,850.00	\$ -	\$ 735.91		\$ 1,897.35

*Store staff and key staff were not separated out. Miscellaneous expenses were generated from fundraisers, beans and a ladder.

Memories from the 2013 Winter ArtGymSD at SDAI





Spring 2013 ArtGymSD was an eye opener

48 days open in the evening during the time period from 4/1 to 6/31, the upstairs shop was open for 48 days.

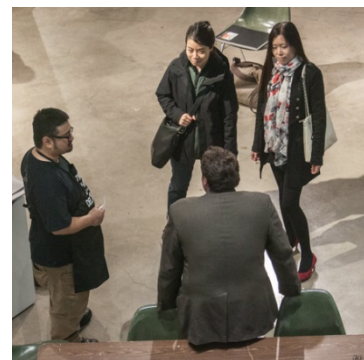
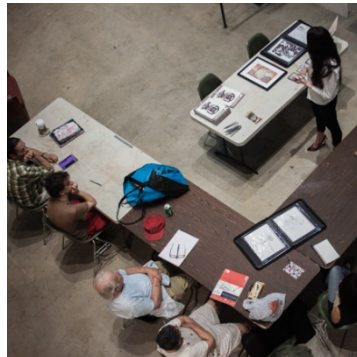
Spring we had 3 photo shoots, 48 life drawing sessions, 6 Shop-Talks, 4 Merkabah's, 3 Featherweight Bazaars, and The Graphite Social Fund Raiser. In the end, combined ArtGymSD fundraiser, life drawing, and Shop-Talks earned \$1042 dollars under expences (in the red). The shop added another \$2922 net profit less staff for Winter Quarter. Shop and ArtGymSD combined put SDAI \$1880 ahead. It was decided to increase the day use fee from \$5 to \$10 for summer to help make the life drawing part of the program more self-sustaining.

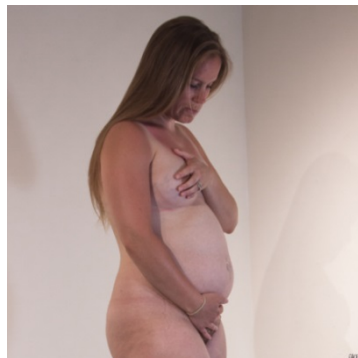
Quarter	Shop Days	Gym Days	Total Uses	Paid Uses	Unpaid or Pass	1-Day Pass	Photo
Spring 2013	48	48	1237	904	300		33

Quarter	SDAI Membership	Gift	Door	Store	Gallery Sales	Pass Sales	Program Fee
Spring 2013	\$ 100.00	\$ 501.00	\$ 450.00	\$ 5,952.00	\$ 1,435.00	\$ 985.00	\$ 5,626.00

Quarter	Staff ArtGymSD	Admin Asst ArtGymSD	After Hours Store Staff	Models	ShopTalk	Misc Merch	Facility Cost	SDAI Net
Spring 2013	\$ 1,960.00	\$ 90.00	\$ 780.00	\$ 5,265.00	\$ 450.00	\$ 495.49		\$ 1,873.91

Memories from the 2013 Spring ArtGymSD at SDAI





Schedule 2012-2013, Shop Talks, Photo-Shoots and Fund Raisers

Spring and Summer, 2012

When ArtGymSD at SDAI first opened it ran 6 days a week Monday through Thursday from 6:00pm to 9pm, Saturday from 7am to 10am and Sunday's 9am to 12am. Models were not provided.

- June 13 Life Drawing test run...

Fall, 2012

ArtGymSD at SDAI was open most Mondays and Wednesdays, 5 to 9 with life drawing models provided. In addition, the following events were also sponsored.

- November 19 Igor Koutsenko Figure Drawing
- October 1 Rapid Fire Modeling Fund Raiser
- October 15 Photo-Shoot
- November 9 The Graphite Social
- November 19 Photo-Shoot
- December 10 Photo-Shoot

Winter, 2013

- January 6 Igor Koutsenko Wood Block Printing
- January 13 Fred Marinello Scratchboard
- January 21 Photo-Shoot
- January 27 Shant Beudjekian Charcoal Figure Drawing
- February 3 Carlos Castrejón Figures in Motion
- February 10 Merkabah Musical Art Experience
- February 11 Photo-Shoot
- February 17 Jon-Loren Bazan Sculpture
- March 3 Chuck McPherson Watercolor
- March 10 Jonathan Williams Classic Oil Painting
- March 17 Misty Hawkins Mixed Media
- March 18 Photo-Shoot
- March 24 Kevin Inman Plein Air Balboa Park
- March 31 Carlos Castrejón

Spring,

- April 10, 17, 24 Jon-Loren Sculpture Demo
- April 14 Anna Stump Making Your Art Your Business
- April 15 Photo-Shoot
- April 21 Nancy Carp Capturing Gestures
- April 27 Featherweight Bazaar
- April 28 Kris Finch Portrait
- May 5 Richard ChauDavis Morning Routine Shoot

- May 20 Photo-Shoot
- May 25 Featherweight Bazaar
- June 17 Photo-Shoot
- June 22 Featherweight Bazaar
- June 23 Lex Archibald Kinetic Sculpture

Summer

- July 7 Lex Archibald Enameling
- July 14 Tee Taylor Photography Primer
- July 15 Photo-Shoot
- July 21 Merkabah Musical Art Experience



Description of Programs run at ArtGymSD at SDAI

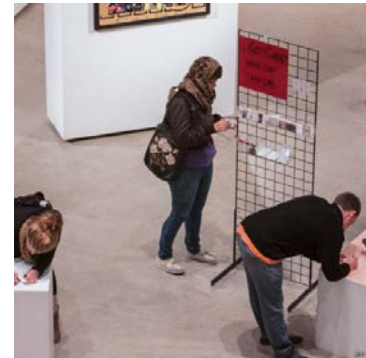
Life Drawing

Brook Castrejón Solis has set up a wonderful life drawing program (most) Monday, Wednesday, Saturday and Sunday evenings, 6pm to 9 pm, at SDAI 'Museum of the Living Artist.' Every week talented life drawing models are available from 6 to 9pm on the floor of the SDAI gallery in Balboa Park. Models do their own special nude and/or costumed poses.



ArtCards

As an introduction to ArtGym, a display was set up for people to make ArtCards and then swap .



Gathering

The Gathering is a social, relaxed group where artists, aficionados, and significant others, meet over potluck to discuss their latest work and adventures. Children are welcome but the work is not censored so parental discretion is strongly advised. Jonathan Williams (local artist) acts as the moderator for The Gathering. The Gathering occurs on the first Sunday of each month, 3:30 to 6pm

Monthly Photography Session

Jeff Brosbe is responsible for the monthly photography session. Gallery lighting, a 3 hour photo shoot, and very talented models have made this an exciting and productive event for photographers. A signed model release is included in the \$20 dollar charge to participate.



Rapid Fire Modeling Fund Raiser

Brook Castrejón Solis also organizes the occasional Rapid Fire Modeling Fund Raiser where in true ArtGymSD spirit, several of San Diego's finest, talented and most creative models donate their time and pose in rapid succession on at least two model stands. The cost is just \$10, monthly pass, and/or generous donation of your own choosing.

Graphite Social

Shaunna Witt and Leslie Cortez created the Graphite Social, an RSVP \$15 fund raising and life drawing event complete with special models, guest artists, music, and lot of fun. Art is made... sometimes by people new to the process.

Shop Talk

There are shop talks on most Sunday's 6 to 9pm. The talks (formal and informal) are hands on demonstrations by local artists with life drawing occurring in another part of the gallery. Roberta Kuntz coordinates, sets up and facilitates the Shop Talks.



Merkabah

Come join us for a night of improvised meditation music and art! Bring your supplies and come get in that creative flow with us. A life drawing model will be provided. Please like the Merkabah Facebook page at www.FaceBook.com/merkabah10 Jesus Gonzalez and Jon Sprague created and coordinate this event.

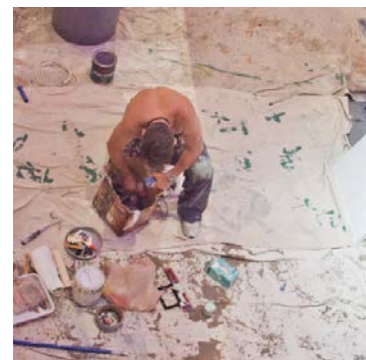


Featherweight Bazaar

Organized by Danny Dwaine Wells II.FB is a collaborative event between dancers, visual artists, and musicians. Come create a free and open space to explore boundless and dynamic energy. We welcome dancers of all levels, visual artists of all modalities and musicians of all instruments; including DJs.

Your Studio

Anytime ArtGymSD is open you are welcome to use the gallery floor as your own open studio, limited number of lockers are available. Bring in your own model, work on that large project, get out of the house, work in community... No maids...



Other Numbers (plus or minus 30 dollars... as of 8/1/2013)

Quarter	Gross Profit ArtGymSD Alone	# FR	Gross Profit Fundraisers	Donations Off Beat (less FR)	Program Fees (less FR)	Cost of Service	Cost of Programs (Less FR)
Spring and Summer 2012	(231.00)	0	-	-	1,179.00		1,410.00
Fall 2012	79.49	2	474.49	15.00	3,420.00		3,830.00
Winter 2012-2013	385.09	3	1,084.46	5.10	4,616.00		5,320.47
Spring 2013	(1,082.12)	1	218.86	466.00	5,881.00		7,647.97
Summer 2013 at 18 days	(401.20)	0	-	19.00	2,494.00		2,914.20
	0.00						
	0.00						
	0.00						
Totals	(1,249.74)	6	1,777.81	505.10	17,590.00	-	21,122.64

Quarter	Shop Door Gross Profit	Shop Sales Gross Profit	Gallery Sales Gross Profit	Payroll Shop	Shop Staff as a % of Shop Gross Profit
Spring and Summer 2012	319.18	1,776.36		-	0%
Fall 2012	-	-	-	-	0%
Winter 2012-2013	157.00	1,586.41	-	210.00	12%
Spring 2013	450.00	2,678.40	574.00	780.00	21%
Summer 2013 at 18 days	164.00	1,019.90	-	120.00	10%
					0%
					0%
					0%
Totals	1,090.18	7,061.07	574.00	1,110.00	13%

Comments: